

WALLBEDS



Australia

Reclaim Your Space



Important Safety Advice Sheet

PLEASE READ BEFORE YOU BEGIN:

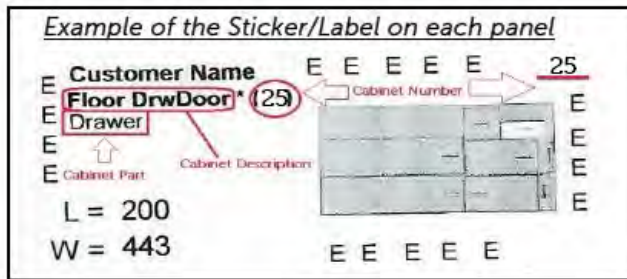
- Please read and understand the instructions prior to assembly. Incorrect installation of this product could possibly result in personal injury or physical damage.
- WallBeds Australia recommends two people to safely assemble and install the wall bed - It is not recommended you try to install this bed on your own.
- The wall bed **MUST** be securely fastened to the wall prior to use. Failure to do so will cause the bed to tip over & may cause damage to the cabinet or serious personal injury.
- All additional cabinetry must be securely fasten to the Wall Bed cabinet.
- Whilst these products are DIY it is recommended the wall bed be installed by a qualified trades person if you are not comfortable with the installation of this product.

WallBeds Australia is not responsible for any damages or injuries incurred by incorrect installation of this product.

AB-4b Assembly Instructions

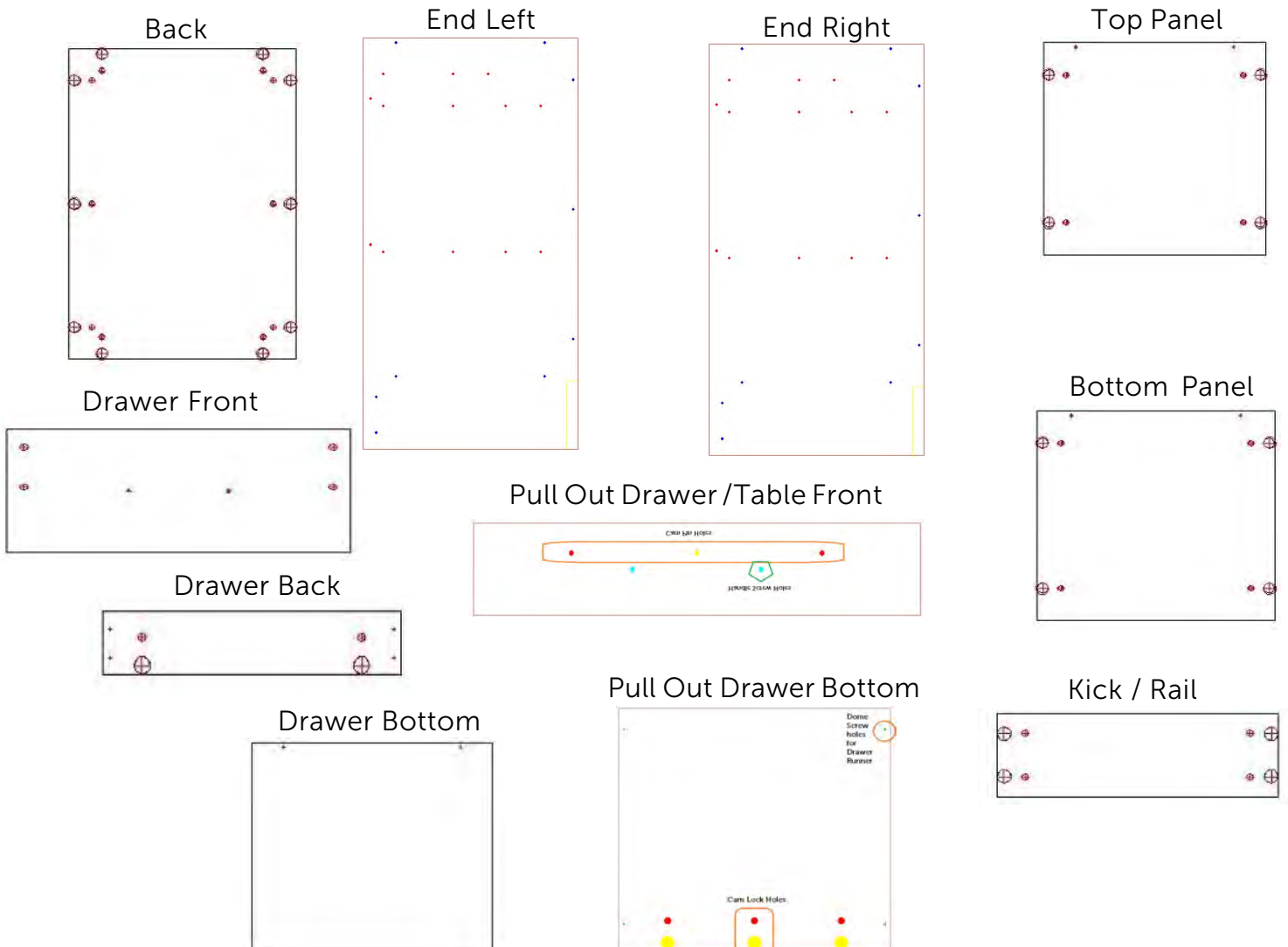
Note: If you have two of the same cabinet each cabinet will have a different cabinet number. Prior to assembly, separate and group all matching panels numbers.

Panel Stickers/Labels – Do not remove any cabinet stickers from the panels until the units have been built, as these will assist with assembly. Most of the stickers are placed on the “back” or underside of the cabinet and will not be seen once assembled.



Please Note:
Cabinet number shown is an example only.

AB-4b Drawer Cabinetry Panels



AB-4b Drawer Hardware Parts

Small Handle



Pull Out Drawer / Table Runners



Drawer Clip



Handle Fixing Screw



Drawer Runners & Metal Drawer Sides



Cam Pin



Euro Screw



Cam Lock



Domed Head Screw



28mm Wood Screw



Step 1 – Inserting Drawer Cabinetry Hardware

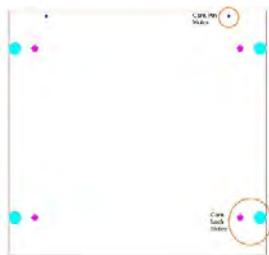
Cam Locks – Insert all Cam Locks into the following panels as described by the cabinet part located on the cabinet sticker.



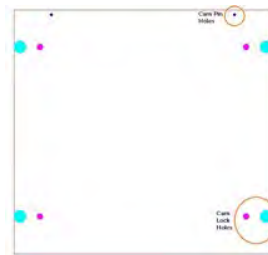
Back Panel



Bottom Panel



Top Panel



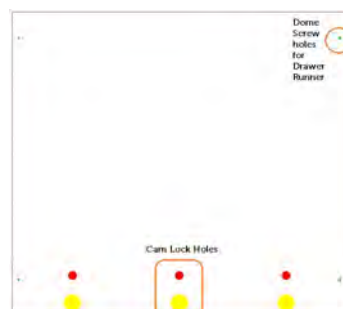
Draw Back



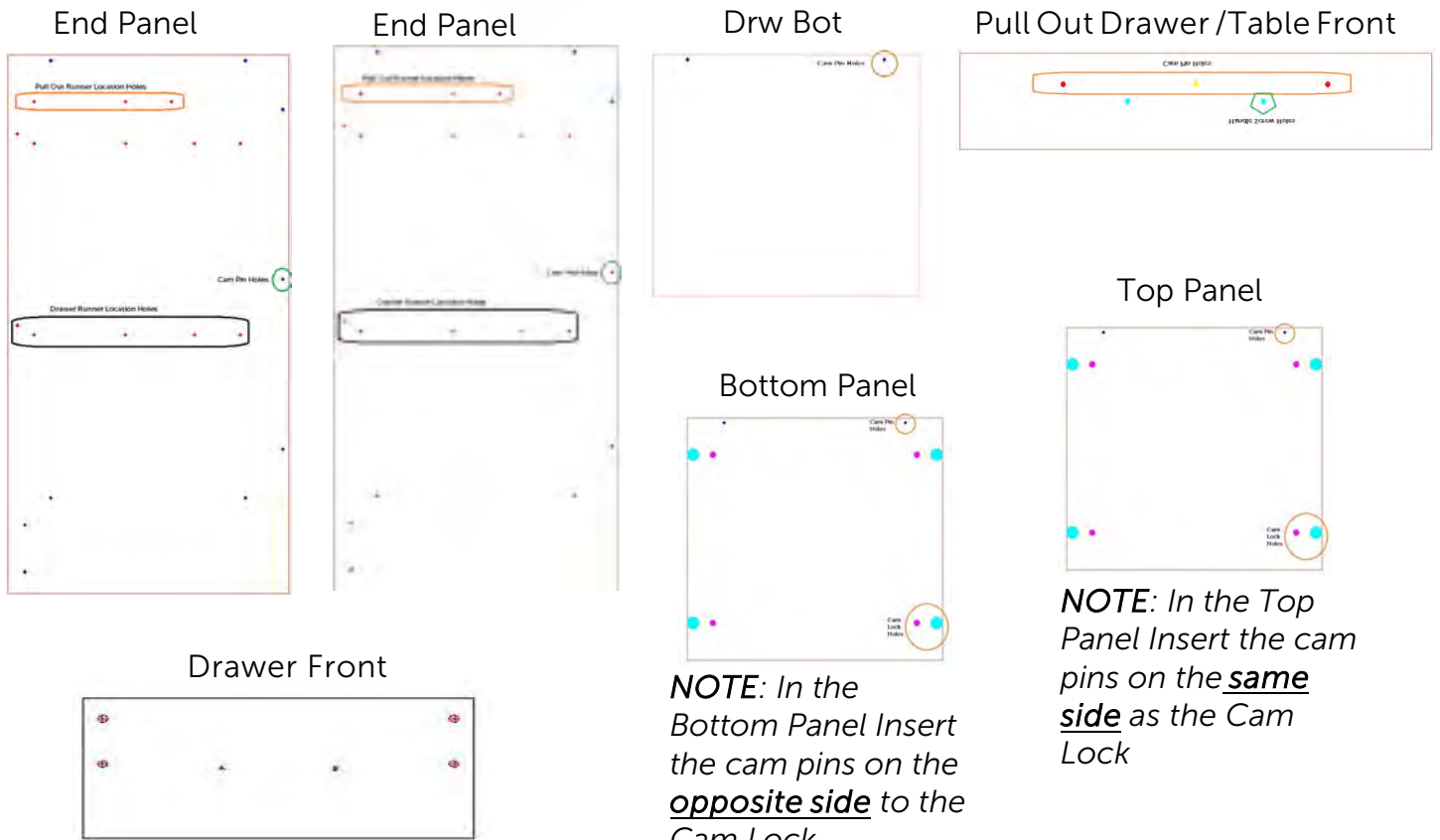
Rail / Kick



Pull Out Drawer / Table Bottom



Cam Pins Insert all Cam Locks into the following panels as described by the cabinet part located on the cabinet sticker.



NOTE: In the Bottom Panel Insert the cam pins on the opposite side to the Cam Lock.

NOTE: In the Top Panel Insert the cam pins on the same side as the Cam Lock

Attach the runners prior to assembling the cabinetry.

Drawer Runners –



Line up the holes in the metal runner with the pre-drilled holes in the End Panel. Attach these runners using the Euro screws. *Do this for both End Panels - Refer to images 7 & 8 page 10*

Pull Out Drawer / Table Runners –



Turn the runner over to view from the back. Detach the drawer slide from the main sliding runner by pulling the clip as indicated by the arrow on the clip. **Refer image 14 page 12.** Line up the three holes in the metal runner with the pre-drilled holes in the End Panel. Attach these runners using the Euro screws. **Refer image 15 page 12.** Repeat for the remaining End Panel.

DO NOT re-insert the drawer / table slide at this stage.

Drawer Clips –



Insert these into the drawer front ensuring the up & down arrows on the drawer clips are facing the outside edge of the drawer panel.

Fix these into the drawer front by tapping them in gently with a hammer - *Refer image 11 page 11*

Step 2 Drawer Cabinet Assembly

Start the cabinet assembly by using either one of the cabinet End Panels.

Cabinet Back Panel - Ensuring the cam locks are facing away from the inside. Place the cabinet back panel onto the side panel. Match up the cam locks with the cam pins. Tighten the cam locks and cam pins together by using a Phillips head hand screwdriver.

Cabinet Bottom Panel- With the cam locks facing away from the inside of the cabinet attach the bottom panel to the end panel and back panel. *Refer image 12 page 11*

Cabinet Top Panel - With the cam locks facing the inside of the cabinet attach the bottom panel to the end panel and back panel. - Ensure the cam locks are facing the inside of the cabinet. *Refer image 11 page 12*

Cabinet Kick / Rail Panel - With the cam locks facing to the back of the cabinet attach the kick panel to the end panel.

Place the remaining end panel on top of the previously assembled panels. Ensuring the cam pins are lined up with the cam locks. Tighten the cam pins to the cam locks.

PullOut Drawer/Table - Attach the pullout drawer / table runners to the drawer / table panel using the dome head screws. The holes for these are pre-drilled. *Refer image 16 page 12*

Pull Out Drawer / Table Front - Attach the Pull Out Drawer / Table to the front panel by tightening the cam pins into the cam locks. *Refer image 17 page 12*

Drawer Assembly

Note – There are no pre-drilled guide holes on the underside of the drawer bottom panel for the dome head screws. The dome head screws supplied do not require these holes to be pre-drilled.

Drawer Back Panel to Drawer Bottom Panel - With the cam locks facing the back attach the drawer bottom panel to the drawer back panel. Tighten cam locks to cam pins. *Refer image 2 page 9*

Metal Drawer sides - Attach the metal drawer sides to the drawer bottom and drawer back panels using the dome head screws. *Refer image 1 page 9*. Place assembled drawer into the Cupboard Drawer cabinet.

Attaching Drawer Fronts– To ensure the drawer front is the correct way up. Place drawer front on to the drawer clips -**DO NOT PUSH DRAWER FRONT FULLY ONTO THE DRAWER CLIPS**.

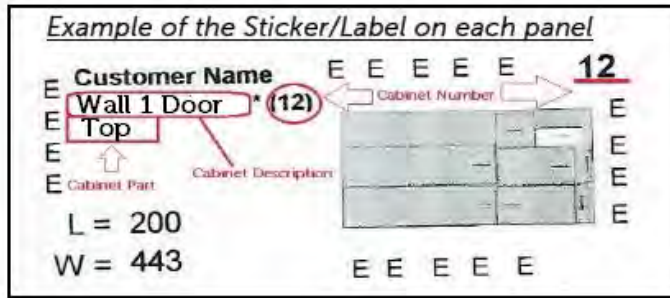
Gently close the drawer ensuring the top edge of the drawer front will be level with the top panel or drawer front above. If the drawer front is higher than the panel, remove it from the drawer clips and turn the drawer front up the opposite way. Double-check the drawer front is now level with the cabinet top panel.

Once the drawer front is the correct way up, push the drawer front into the metal sides of the drawer until you hear the drawer click into place on both sides. Tighten the screws on the outside of the drawer clips using a Phillips head hand screwdriver.

AB-4b Bookcase Instructions

Note: If you have two of the same cabinet each cabinet will have a different cabinet number. Prior to assembly, separate and group all matching panels panel numbers.

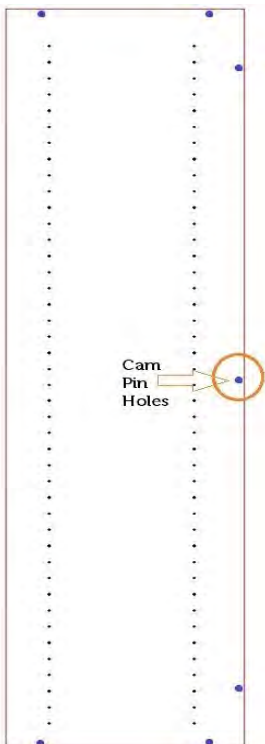
Panel Stickers/Labels – Do not remove any cabinet stickers from the panels until the units have been built, as these will assist with assembly. Most of the stickers are placed on the “back” or underside of the cabinet and will not be seen once assembled.



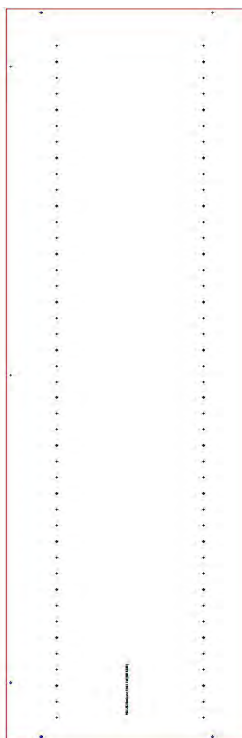
Please Note:
 Cabinet number shown is an example only.

AB-4b Bookcase Panels

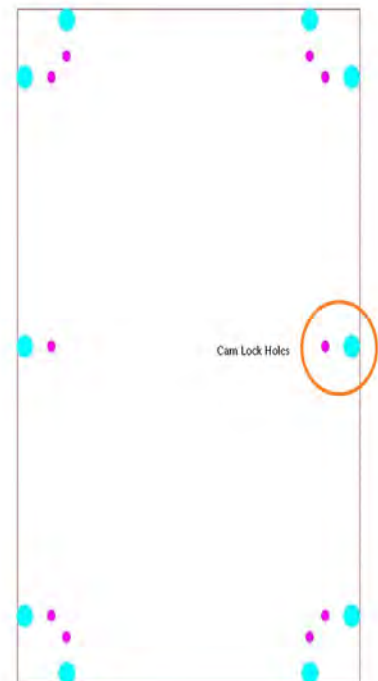
End Left



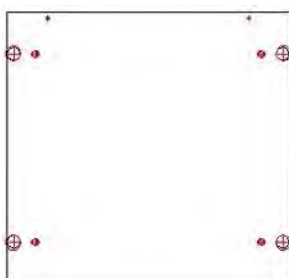
End Right



Back Panel



Top Panel



Bottom Panel



AB4b Bookcase Hardware Parts

Cam Lock



Cam Pin



28mm Wood Screw

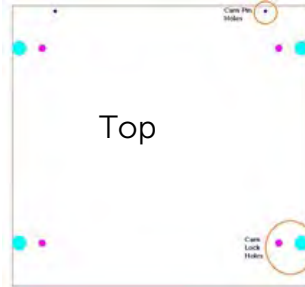
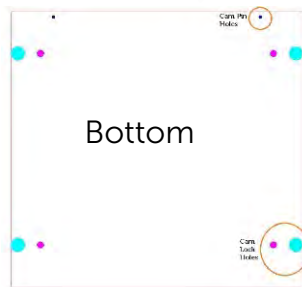
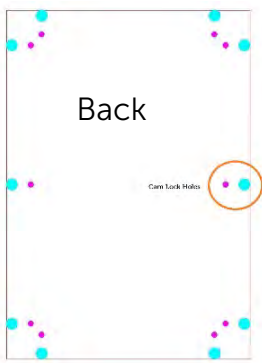


Shelf Pin

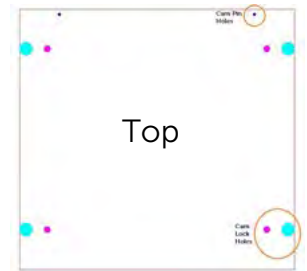
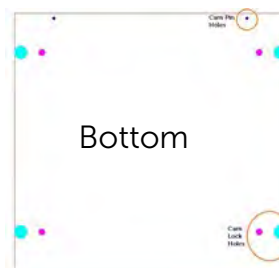
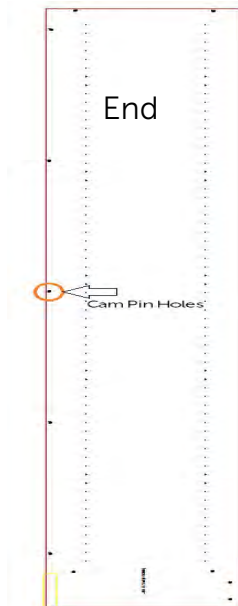
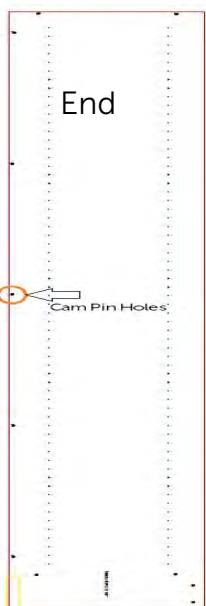


Step 1 – Inserting Hardware

Cam Locks – Insert all Cam Locks into the following panels as described by the cabinet part located on the cabinet sticker.



Cam Pins Insert all Cam Locks into the following panels as described by the cabinet part located on the cabinet sticker.



NOTE: In the Top and Bottom Panels Insert the cam pins on the **opposite side** to the Cam Lock.

Step 2 - Bookcase Assembly

Start the Bookcase assembly by using either one of the Bookcase End Panels and fixing it to the Back Panel. Ensure the cam locks on the Back Panel are not facing what will be the inside of the Bookcase when built.

Back Panel- Place the Bookcase Back Panel onto the End Panel. Match up the cam locks with the cam pins. Tighten the cam locks and cam pins together by using a Phillips head hand screwdriver.

Bottom & Bottom Panels- With the cam locks facing away from the inside of the Bookcase attach the Bottom Panel to the End Panel and Back Panel. Repeat this process with the Top Panel.

Place the remaining End Panel on top of the previously assembled panels. Ensuring the cam pins are lined up with the cam locks. Tighten the cam pins to the cam locks.

Tip: You may need to lightly tap the cam pins into the cam locks with a rubber mallet. Ensure you do this where the cam pins are. Failure to do so may result in damage to the End Panel.

Step 3 – Fixing both Units together and to the Alpha Wall Bed

- Place the Drawer Cabinet unit next to the side of the Alpha Wallbed that it will be attached to. Ensure the front edge of the drawers are flush with the front edge of the wall bed cabinet.
- Place the bookshelf unit on top of the drawer cabinet unit and line up the front of the bookcase bottom panel with the front edge of the drawer.
- Check that the bookshelf end panel is also flush with the front edge of the wall bed cabinet end panel.

You will need to pre-drill the 5mm screw holes.

When attaching the Pull Out Drawer / Table unit to the bookshelf.

- Remove the pull out drawer / & pre-drill a 5mm hole up through the top panel of the pullout drawer unit into the bottom panel of the bookshelf. Do one towards the front and then one towards the back of the unit. **IMPORTANT** - Use caution not to go all the way through to the bottom panel of the bookcase. Attach together using the 28mm screws supplied.
- Using an existing shelf pin hole, fix the bookshelf to the side of the bed cabinet by using the 28mm wood screws supplied.

Removing Panel Stickers/Labels

To remove once installed, heat up with hair dryer & then to remove any sticky residue use wax and grease remover or similar.

Avoid using a razor blade as you may damage the cabinetry.

IMPORTANT SAFETY INFORMATION

All WallBeds Australia Bookcases and Cabinets must be securely attached to the WallBed before use. Ensure that children DO NOT climb or hang on any part of the Bookcase or Cabinet.

Failure to do so may result in personal injury.

Image 1



Image 2

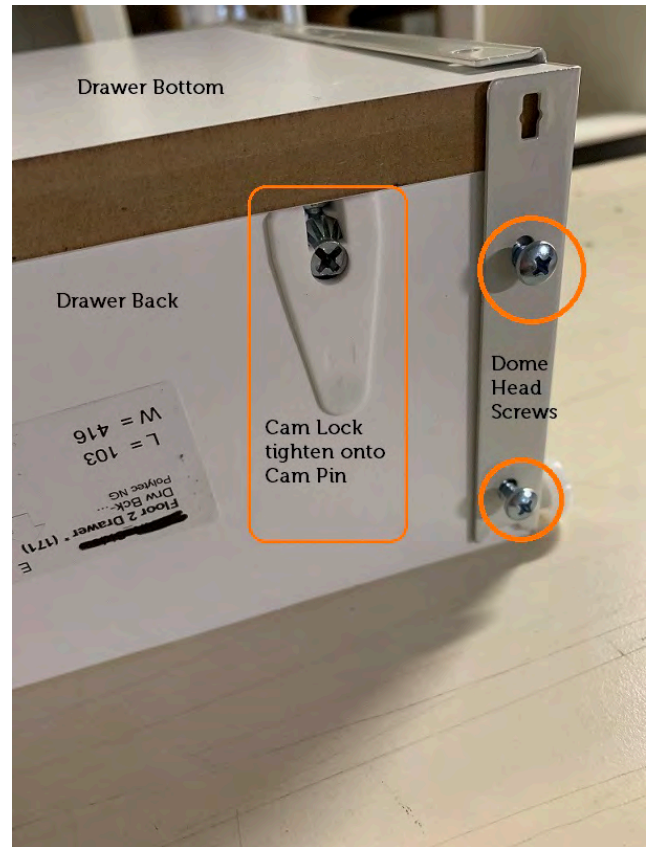


Image 3

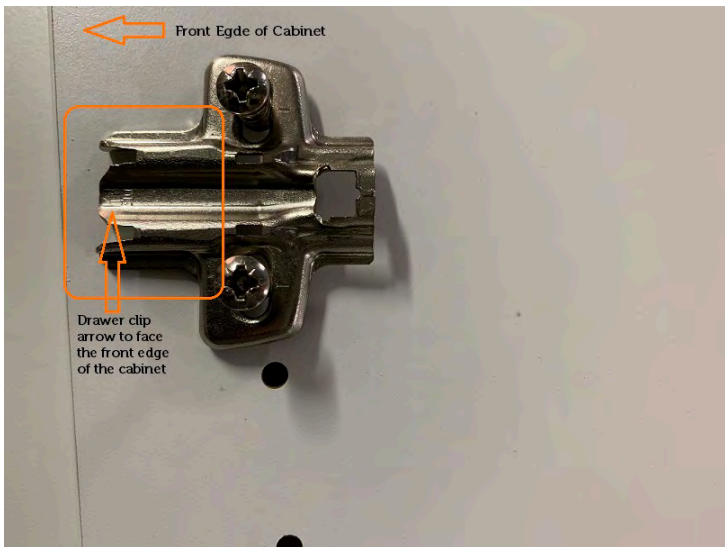


Image 4



Image 5



Image 6



Image 7

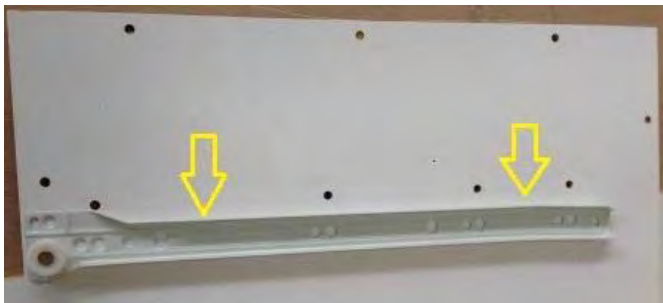


Image 8



Image 9



Image 10



Image 11

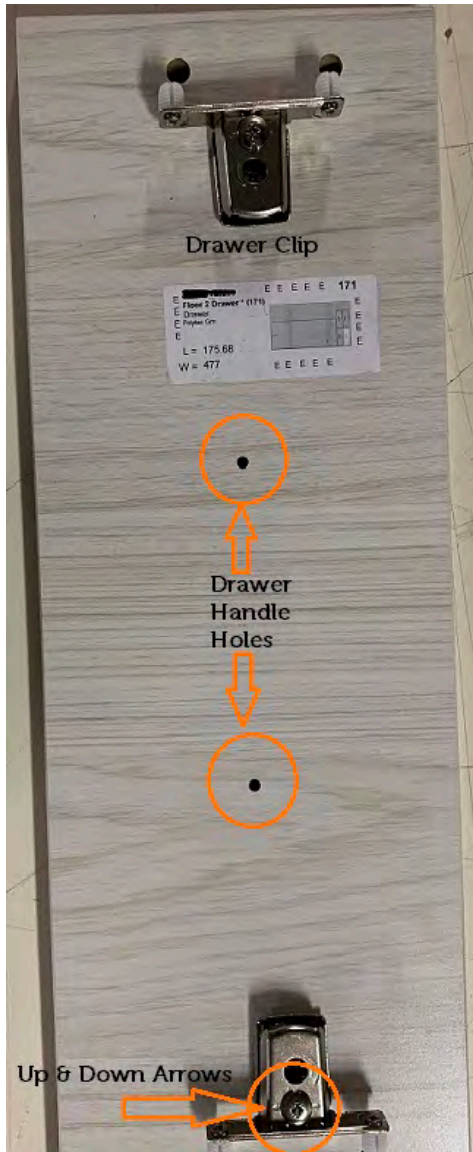


Image 12

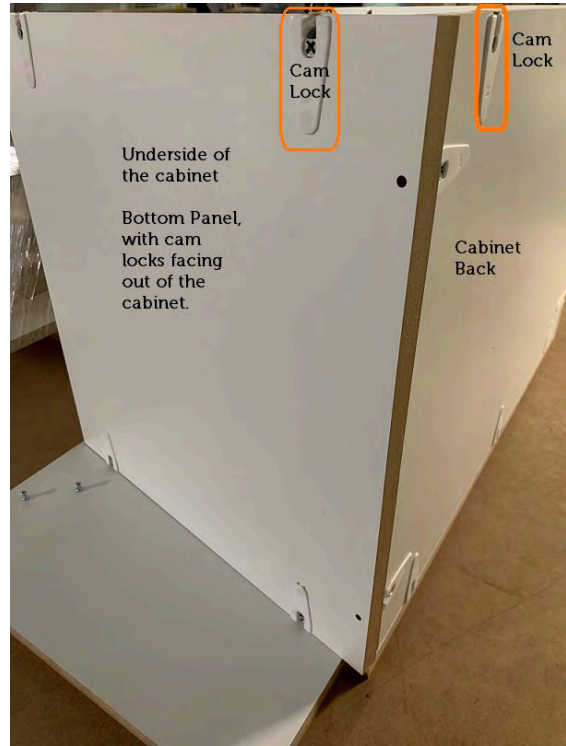


Image 14

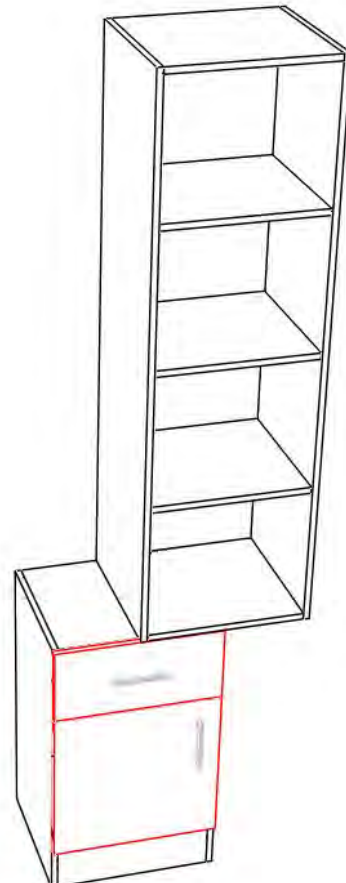


Image 13

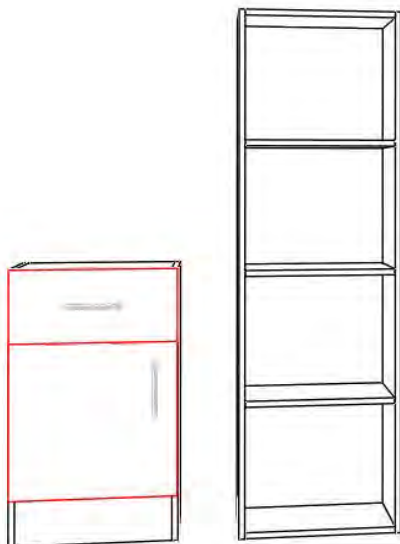


Image 14



Image 15



Image 16

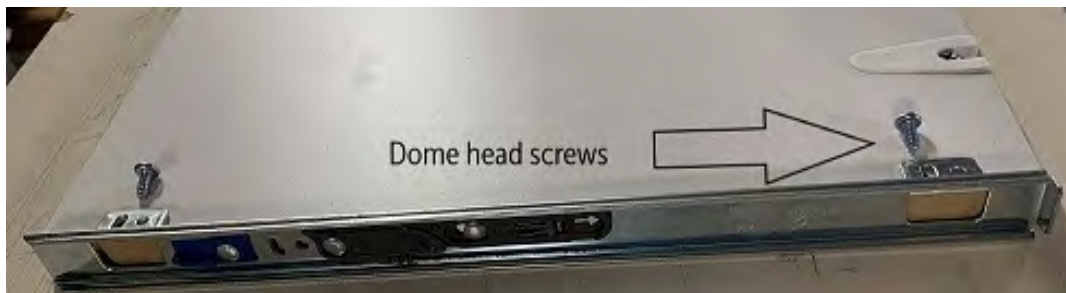


Image 17

