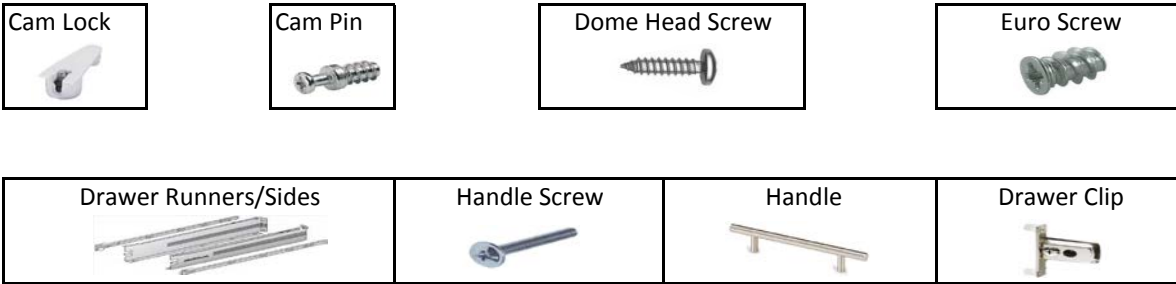


WALLBEDS Australia

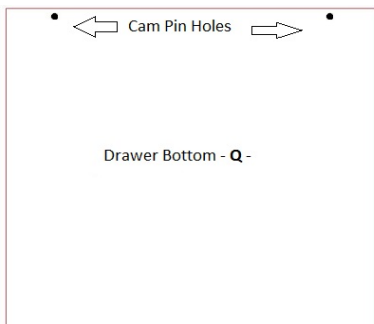
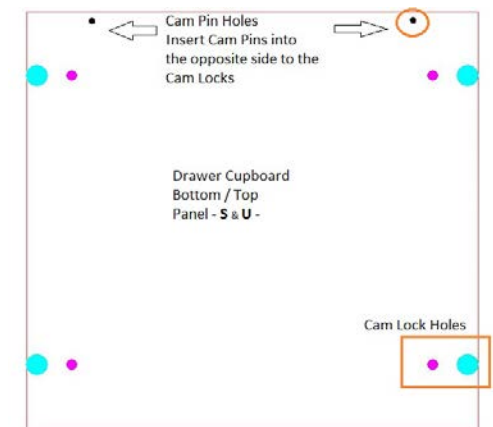
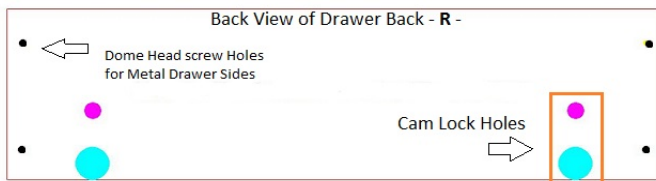
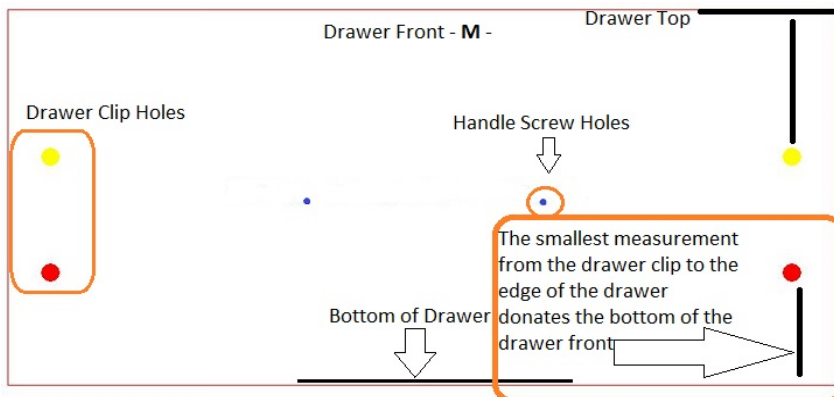
Reclaim Your Space

WallBeds Australia Drawer Hardware and Cabinetry Assembly Instructions

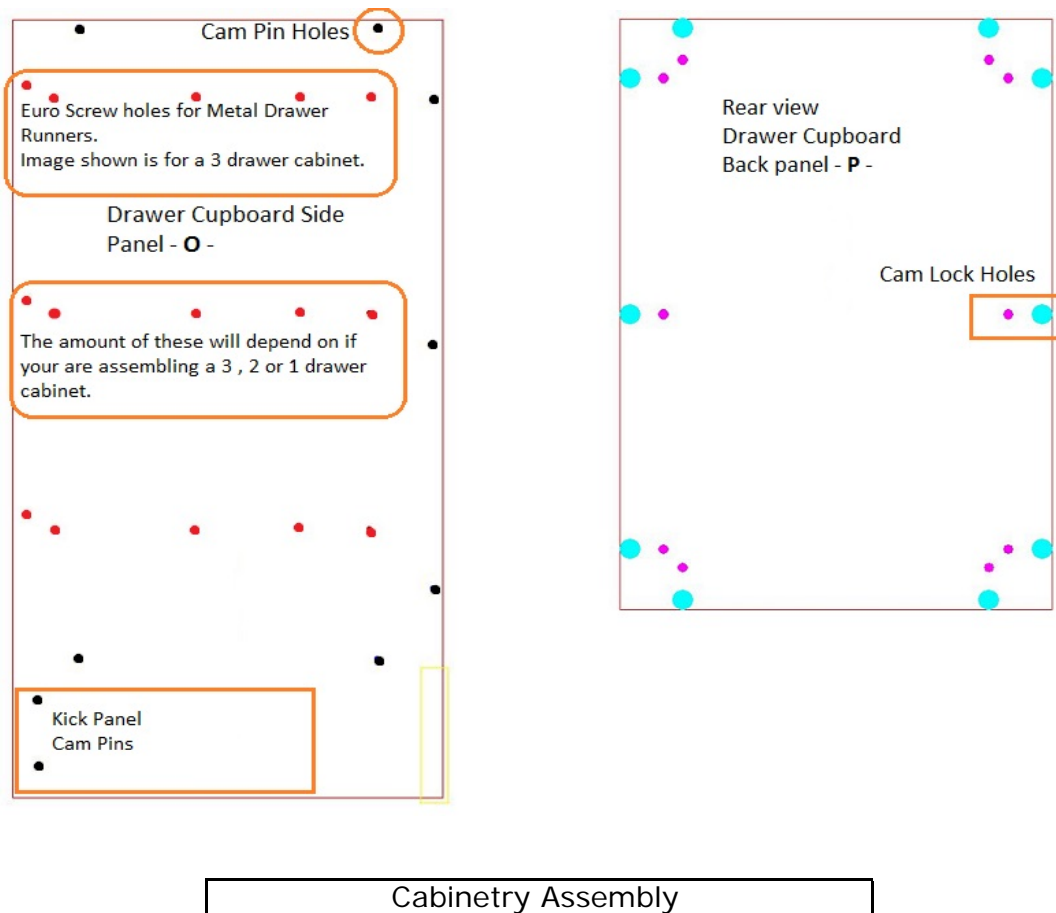
Hardware Parts



Cabinetry Parts



WallBeds Australia Drawer Hardware and Cabinetry Assembly Instructions



Step 1 – Hardware Assembly

Cam Locks – Insert all Cam Locks into the following panels - **U, S, P**

Cam Pins – Insert all Cam Pins into the following panels - **O** - and the opposite side to the cam locks in panels **U & S**

Drawer Runners – Attach these using the Euro screws to the side panels labelled - **O** -

Draw Clips – Attach to the drawer front panel – **M** - by tapping them in with a hammer. Ensure that the adjustable screws on the clips are facing the edge of the drawer panel.

Step 2 – Drawer Cabinet Assembly

Attach the Back Panel - **P** - to the Side Panels – **O** – Cam Locks facing towards the back

Attach the Bottom Panel - **S** - to the Side Panels - **O** - Cam Locks facing down

Attach the Top Panel - **U** - to the Side Panels - **O** - Cam Locks facing down

Step 3 – Drawer Assembly

Attach the Drawer Back - **R** - to the Drawer Bottom - **Q** -

Attach the metal draw sides to the drawer bottom and drawer back panels by using the 4.5mm dome head screws.

Hint: - The bottom edge of the drawer front is the side that has the closest measurement to the centre of the drawer clip. See Photo 4

Starting with the bottom drawer line up the Drawer clips with the metal drawer sides. If the bottom edge of the drawer is not in line with the bottom of the cabinet you will need to flip the drawer up the opposite way.

Once you have ascertained the drawer is the correct way up clip the drawer front – **M** – into the metal sides of the drawer. Tighten the screws on the side of the draw clips. See photo 7

To adjust the gap between the drawers simply adjust by turning the Phillip’s head screw on the drawer clip.

Tip: - If you accidentally clip the drawers on the wrong way see Photos 8 & 9 on how to un-clip the drawer front from the metal drawer sides.

WallBeds Australia Drawer Hardware and Cabinetry Assembly Instructions

Step 4 – Fixing Unit together and to the Wallbed

Once the unit is assembled place it next to the side of the Alpha Bed

Important: Ensure the front edge of the drawer unit is flush with the front edge of the bed cabinet.

Place the bookshelf unit on top of the drawer unit and line up the bottom shelf with the front edge of the drawer.

The bookshelf will then also line up with the front edge of the bed cabinet. Fix the bookshelf to the side of the bed cabinet by using the 28mm wood screws supplied. Use an existing top shelf pin hole for this.

To attach the drawer unit to the book shelf, simply remove the top drawer & screw up into the base of the bookshelf also using the 28mm screws supplied. You may have to pre-drill some holes.

Photo 1

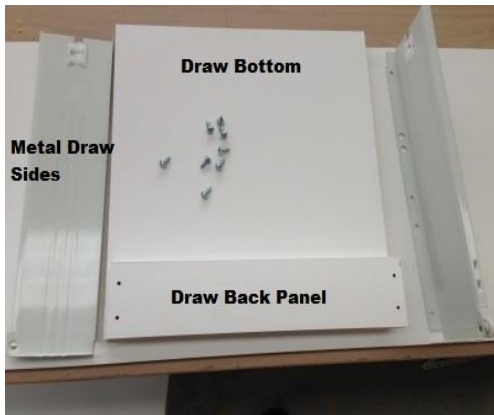


Photo 2



Photo 3



Photo 4



Photo 5



Photo 6

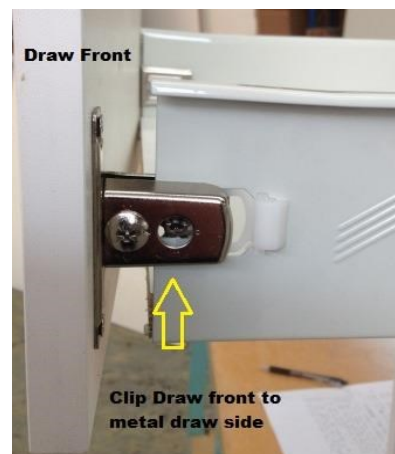


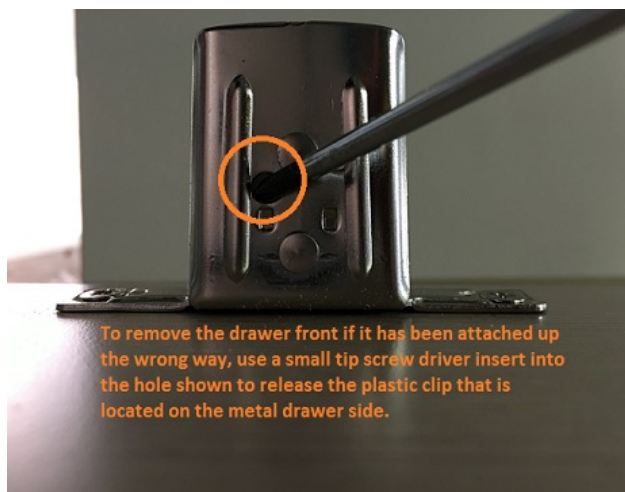
Photo 7



Photo 8



Photo 9



WALLBEDS
Australia
Reclaim Your Space